



Villas Amidst Nature  
@ Velimala, Off Kollur

TS RERA REG.  
NO. P01100004115

Designed to make luxury a Hallmark.





For an abode that lets you celebrate life.

Hallmark 5A for new-age living in Gated Villa Community in the rapidly developing vicinity of Tellapur Municipality.

**5.37**  
Acres  
Total Units 67

**G+2**  
Triplex Villas

**Individual**  
4 & 3 BHK  
Villas

**Villa Sizes**  
Between  
2600-5465  
sq. ft.

**Multi-level**  
Clubhouse  
with world-class  
facilities



## Ultra-modern Facilities and amenities in Clubhouse Zone

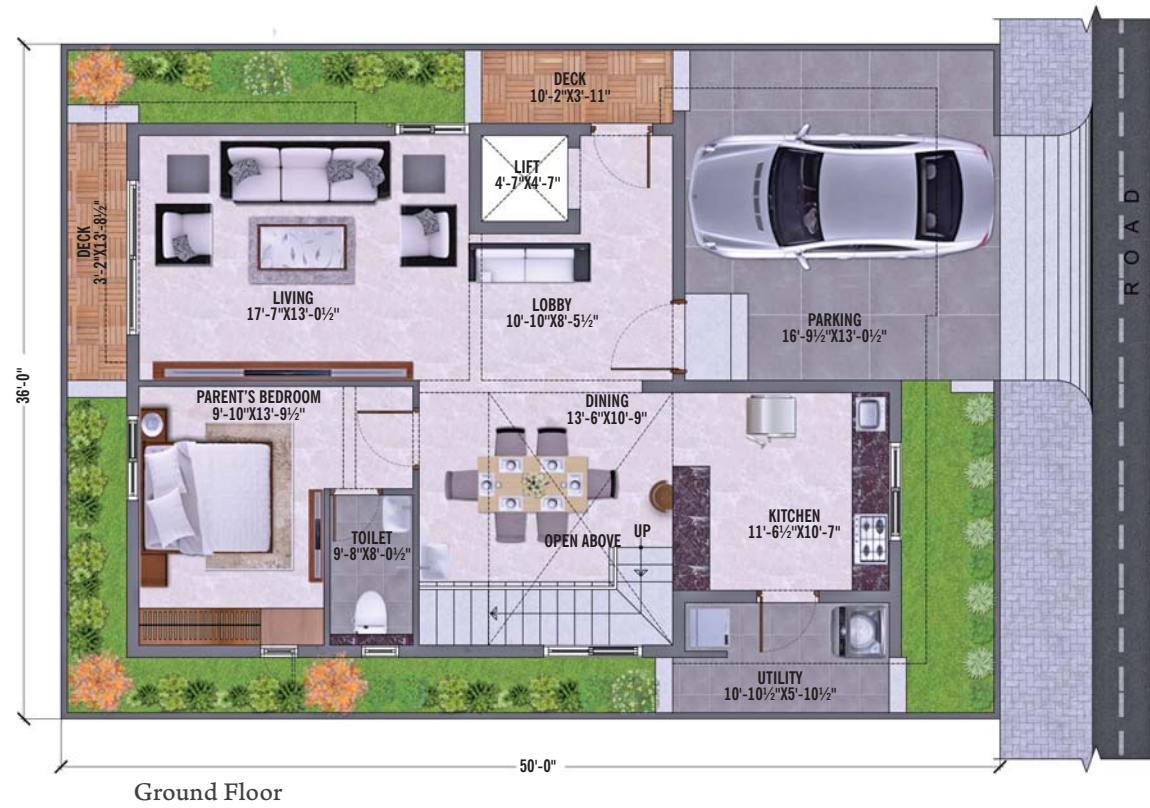
- Banquet Hall with Green Rooms • Mini Banquet Hall • Preview Theater
- Super Market • Swimming Pool • Indoor Games • Creche • Saloon/Spa • Gym
- Conference Room with Admin Office • Badminton Court • Squash Court • Yoga • Café
- Guest Rooms • Work From Home Zone • Library • Laundry Room











First Floor



Second Floor



First Floor



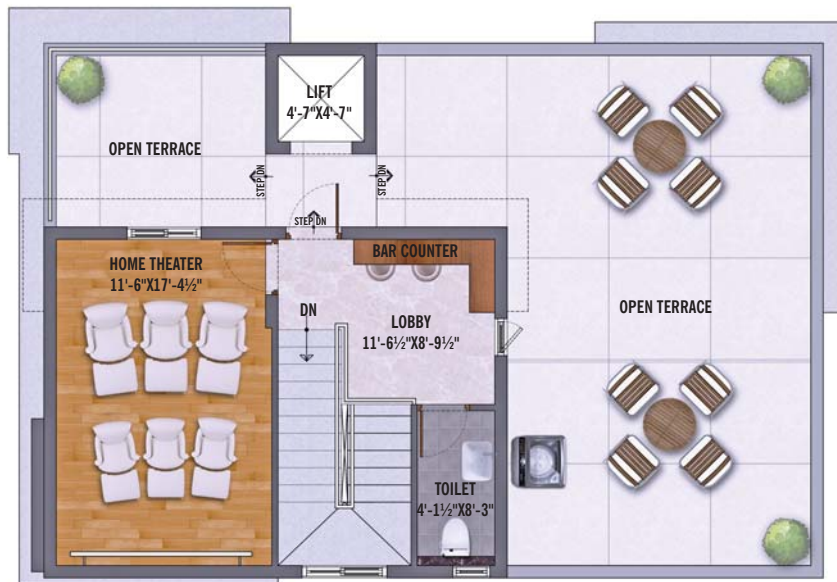
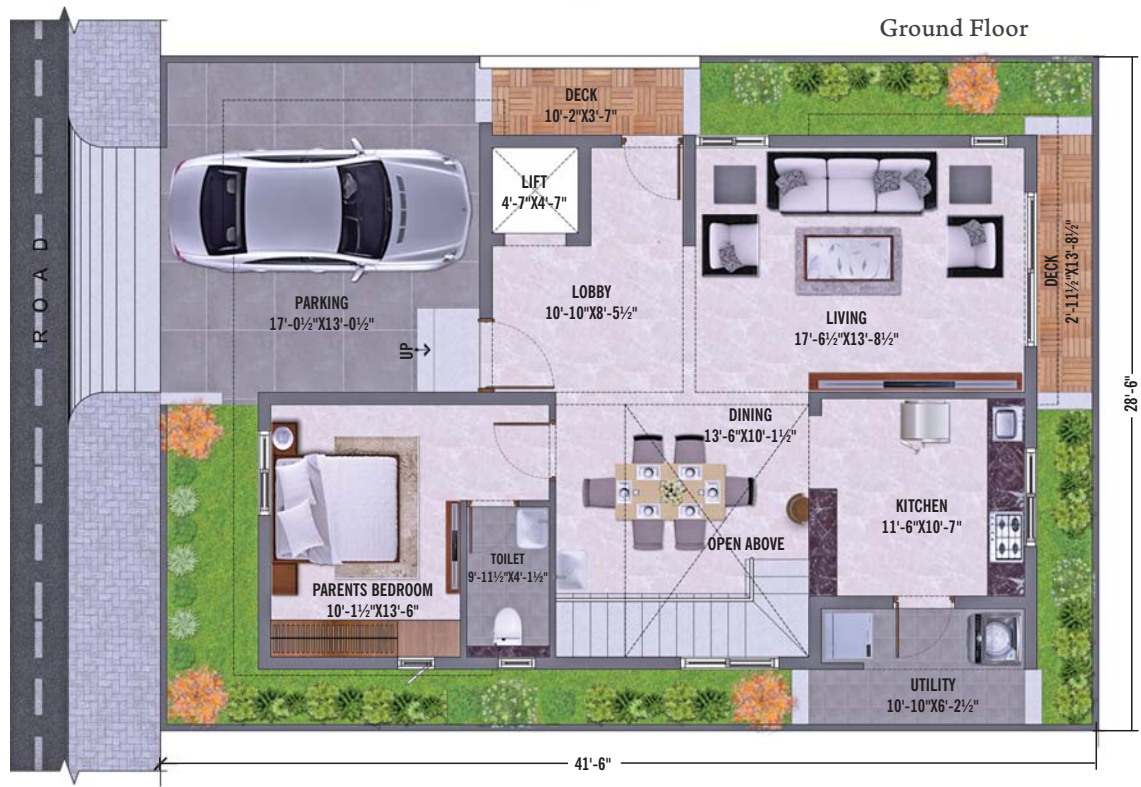
**WEST-FACING - 250 Sq. Yds. | Villa No.s: 2 to 8, 47 to 54**

Ground Floor	First Floor	Second Floor	Total Area
1360 Sft.	1455 Sft.	635 Sft.	3450 Sft.

**EAST-FACING - 200 Sq. Yds. | Villa No.s: 11 to 17, 35 to 42 | Lift Option**

Ground Floor	First Floor	Second Floor	Total Area
1280 Sft.	1145 Sft.	595 Sft.	3020 Sft.





First Floor

Second Floor

**WEST-FACING - 200 Sq. Yds.** | Villa No.s: 2 to 8, 47 to 54 | Lift Option

Ground Floor	First Floor	Second Floor	Total Area
1155 Sft.	1285 Sft.	560 Sft.	3000 Sft.

Disclaimer: Tolerance of + / - 2% is possible in the unit areas on account of design and constructions variances.

NOT TO SCALE







84 Luxury Flats @ Alkapoor Township



240 Premium Flats @ Neknampur



245 Premium Flats @ Puppalaguda



441 Luxury Flats @ Puppalaguda



G+9 Floors Luxury Apartments  
in 5.7 acres @ Manchirevula



Milestones  
when we begin.  
Landmarks  
when we complete.

Hallmark Builders has created a repertoire of homes and hallmarks. What you see here is a legion of completed, ongoing, and proposed-new projects that showcase the commitment of Hallmark. We've always been here for creating homes and oodles of happiness for diverse segments of home-seekers - and Hallmark Skyrena is yet another. With a slew of projects, we expect to add new shades of life to living.



Proposed Lavish Gated Villa Residential Project  
in 47 acres @ Pati close to Kollur exit



G+5 Floors Luxury Apartment  
Project in 3 acres @ Pati, off Kollur



Mid-high-rise G+14 Floors Towering Luxury  
Residential Project @ Pati, Off Kollur



Ultra-Modern G+14 Residential Project  
in 6.9 acres @ Narsingi



Ultra-modern G+29 Floor High-rise Towers  
in 4.62 acres @ Narsingi, off Kokapet



Proposed Ultra-luxury Gated Villa Project  
in 16 acres @ Pati close to Kollur exit